



Bonython Terrace, Liskeard
Guide £155,000

ESTABLISHED 1865
Jefferys

8 Bonython Terrace

Liskeard

PL14 4DR

End of Terrace House with three good sized bedrooms and two reception rooms a short walk from Liskeard town centre. The property has a private lawned garden area to the front and a private walled courtyard to the rear.

Cash buyers only due to "mundic blocks"

No forward chain and viewing highly recommended.

The property is situated in a popular residential area a few minutes walk from the town centre of Liskeard with easy access onto the main A38 roadway. The A38 provides access to the City of Plymouth approximately 30 minutes by car and there is a train service from Liskeard. The local market town of Liskeard is within walking distance where there is a good range of shops, commercial and recreational facilities together with good schooling. There is excellent scenery close by with Bodmin Moor and the beautiful coastal scenery a few miles to the south.

The accommodation comprises with approximate sizes:

ENTRANCE HALL

White uPVC panel and double-glazed door to the front, with white uPVC double glazed window adjoining. Radiator, fitted carpets, stairs to first floor and doors leading to lounge, dining room, kitchen and understairs cupboard with uPVC double glazed window to side and shelving.

LOUNGE

10' 11" X 12' 11" (3.32M X 3.93M+ BAY)

uPVC double glazed window to the front, two radiators, decorative fire (flu disconnected, unable to use), fitted carpets.

DINING ROOM

11' 11" X 11' 3" (3.641M X 3.436M)

uPVC double glazed windows to the rear, fireplace (fire taken out), radiator, telephone point, built in cupboard, fitted carpet.

KITCHEN

7' 10" x 7' 3" (2.38m x 2.21m)

Black lino flooring, traditional wooden 4 paned borrowed light window into utility room, radiator. Kitchen units comprising working surfaces with wall and base units under, stainless sink and draining board, free-standing electric oven and hob. Breakfast bar.

UTILITY ROOM

10' 0" X 7' 4" (3.05M X 2.23M)

uPVC double glazed window looking into courtyard and side, white uPVC double glazed and panelled door into courtyard. Skylight window. Utility units with cupboard under, floor to ceiling cloak cupboards with built-in shelves, plumbing for washing machine.

FIRST FLOOR

LANDING

uPVC double glazed window to the side, access to the roof space.

BATHROOM

8' 0" X 7' 5" (2.43M X 2.25M)

uPVC double glazed window to the rear, suite comprising panelled bath with electric shower over, wash hand basin and low level wc, partly tiled walls, radiator, laminate flooring. Airing cupboard with Alpha boiler INTEC 30 C combination boiler.

BEDROOM 1

11' 2" X 10' 10" (3.4M X 3.3M)

uPVC double glazed window to the rear, radiator, built in wardrobe, fitted wall shelves.

BEDROOM 2

11' 2" X 10' 10" (3.4M+ BAY X 3.3M)

uPVC double glazed windows to the front, radiator.

BEDROOM 3

7' 11" X 7' 6" (2.409M X 2.274M)

uPVC double glazed window to the front, radiator.

OUTSIDE

Private lawned garden area to the front accessed via a shared path. Garden shed. Walled courtyard to the rear with pedestrian door onto the private road.

On street parking available.

VIEWING

Strictly by prior appointment with the Agents - Jefferys (01579 342400)

COUNCIL TAX

Band A

EPC RATING

Band D

SERVICES

Mains Water, Electricity and Drainage are connected to the property. There is also central heating.

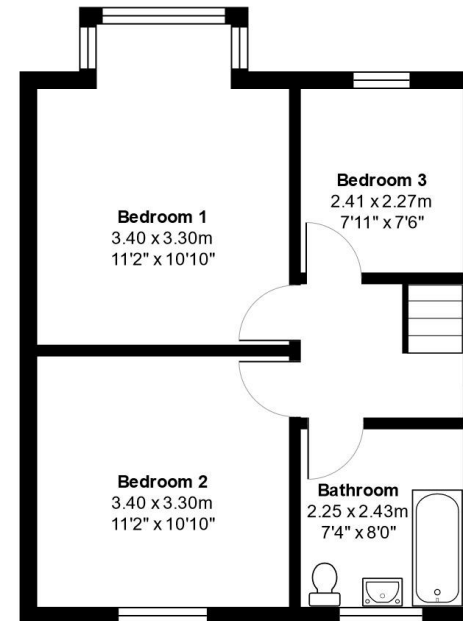
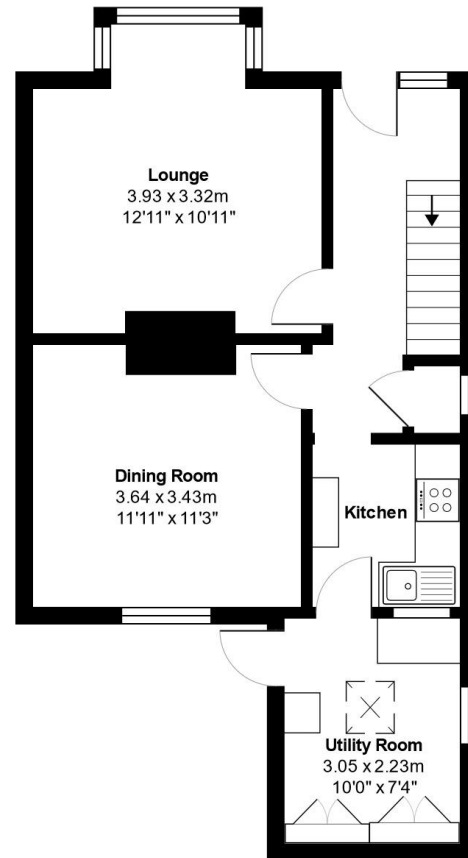
TENURE

The property is being sold as Freehold with vacant possession upon completion.

DIRECTIONS

From the town centre proceed out of the town towards the train station. Turn right on Rosemellen Terrace just after the A38 bridge. Turn right the house is situated in front of you adjoining the garage block.





8, Bonython Terrace, Liskeard, PL14 4DR

Total Area: 92.4 m² ... 995 ft²

All measurements are approximate and for display purposes only

CONSUMER PROTECTION FROM UNFAIR TRADING REGULATIONS 2008: The Agent has not tested any apparatus, equipment, fixtures and fittings or services and so cannot verify that they are in working order or fit for the purpose. A Buyer is advised to obtain verification from their Solicitor or Surveyor. References to the Tenure of a Property are based on information supplied by the Seller. The Agent has not had sight of the title documents. A Buyer is advised to obtain verification from their Solicitor. Items shown in photographs are not included unless specifically mentioned within the sales particulars. They may however be available by separate negotiation. Buyers must check the availability of any property and make an appointment to view before embarking on any journey to see a property. IN ACCORDANCE WITH GDPR (GENERAL DATA PROTECTION REGULATION) Please note that all personal information provided by customers wishing to receive information and/or services from the estate agent and the "Property Sharing Experts" of which Jeffery's is a member for the purpose of providing services associated with the business of an estate agent but specifically excluding mailings or promotions by a third party. If you do not wish your personal information to be used for any of these purposes, please notify your estate agent.